

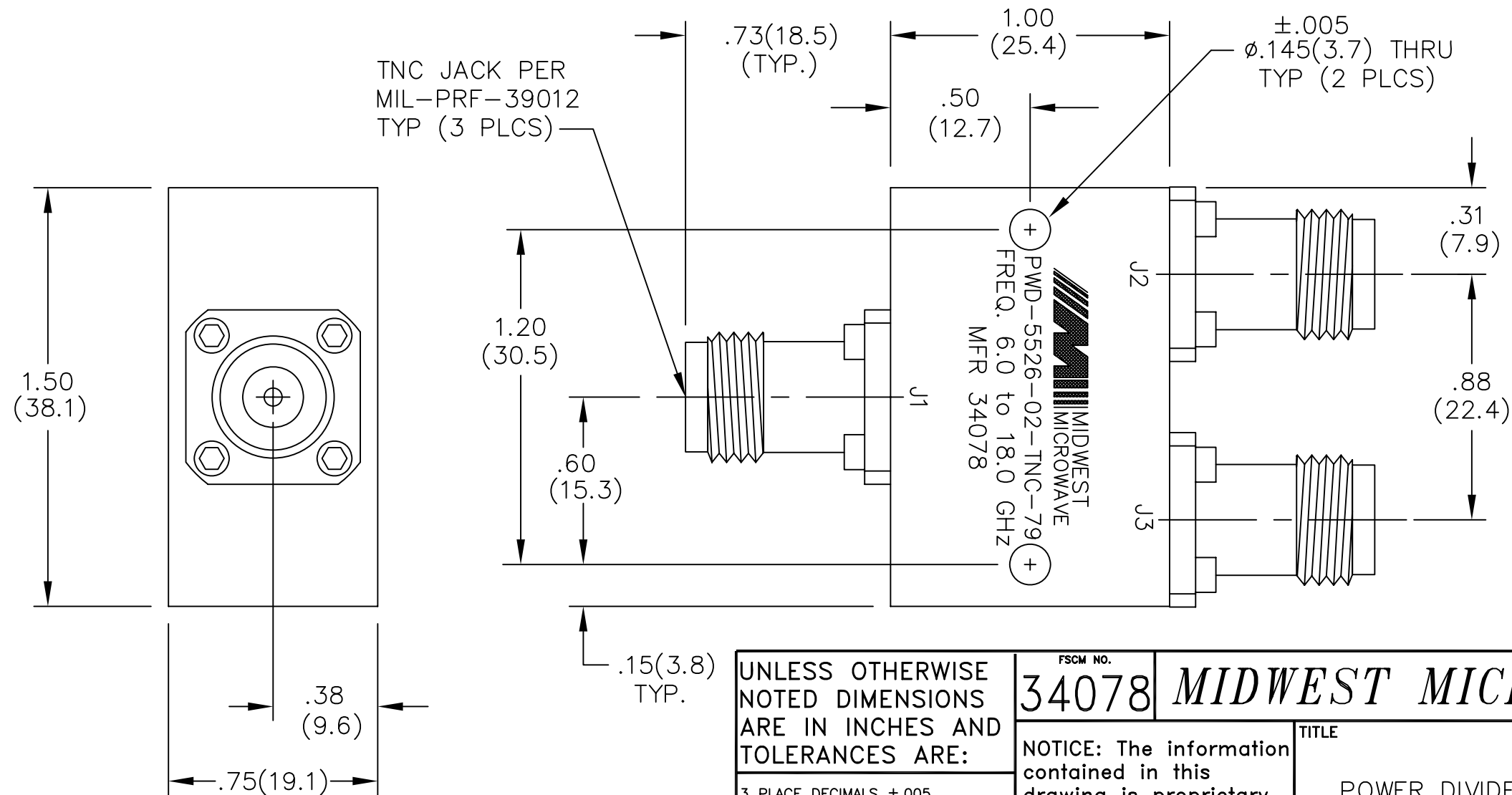
NOTES:

- 1.0 ELECTRICAL SPECIFICATIONS:
 1.1 FREQUENCY RANGE: 6.0 to 18.0 GHz
 1.2 INSERTION LOSS: 0.80dB MAX.
 1.3 ISOLATION: 15dB MIN.
 1.4 VSWR (MAX): 1.80:1
 1.5 OUTPUT UNBALANCE:
 AMPLITUDE: 0.50dB MAX.
 PHASE: 8° MAX.
 1.6 MAX. INPUT POWER:
 30 WATTS AT +25°C W/OUTPUT LOAD
 VSWR < 2.0:1
 1.7 IMPEDANCE: 50 OHMS
 1.8 TEMPERATURE RANGE:
 -65°C to +125°C

- 2.0 FINISHING:
 2.1 GREY PER MIL-E-15090 TYPE II, CLASS 2
 OVER MIL-C-5541 CLASS 3A
 MEETS MIL-F-14072
 MEETS MIL-E-5400

2.2 MARKING: MARK UNIT AS SHOWN

3.0 DIMENSIONS IN PARENTHESIS ARE
 IN MILLIMETERS.



UNLESS OTHERWISE NOTED DIMENSIONS ARE IN INCHES AND TOLERANCES ARE:

- 3 PLACE DECIMALS ±.005
- 2 PLACE DECIMALS ±.02
- FRACTIONS ±1/64
- PARALLELITY: T.I.R. _____
- FLATNESS: T.I.R. _____
- CONCENTRICITY: T.I.R. _____
- ANGLES AND PERPENDICULARITY: ±1°

FSCM NO.
34078

MIDWEST MICROWAVE

NOTICE: The information contained in this drawing is proprietary and must not be used without the permission of Midwest Microwave

TITLE
POWER DIVIDER

DRAWN/DATE
A.BEATTY
3/13/96

ENG./DATE
P.GOODMAN
3/13/96

DRAWING NUMBER
PWD-5526-02-TNC-79

CHECKED/DATE

APPROVED/DATE

SCALE: 2=1 SHEET 1 of 1

DATE	3/14/96	7/19/05
DESCRIPTION	RELEASED	ADDED TITLEBLOCK
REV.	-	-1