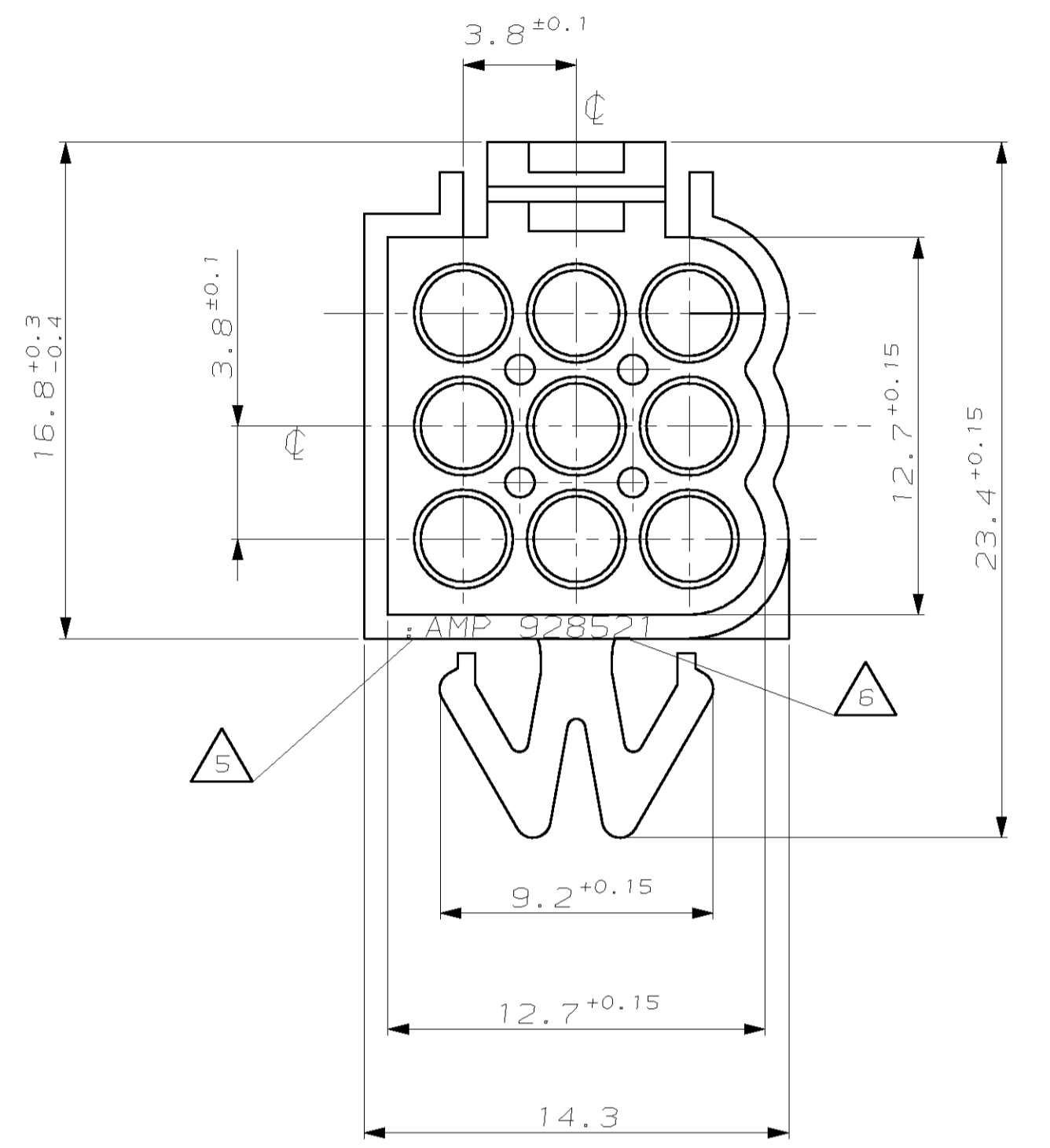
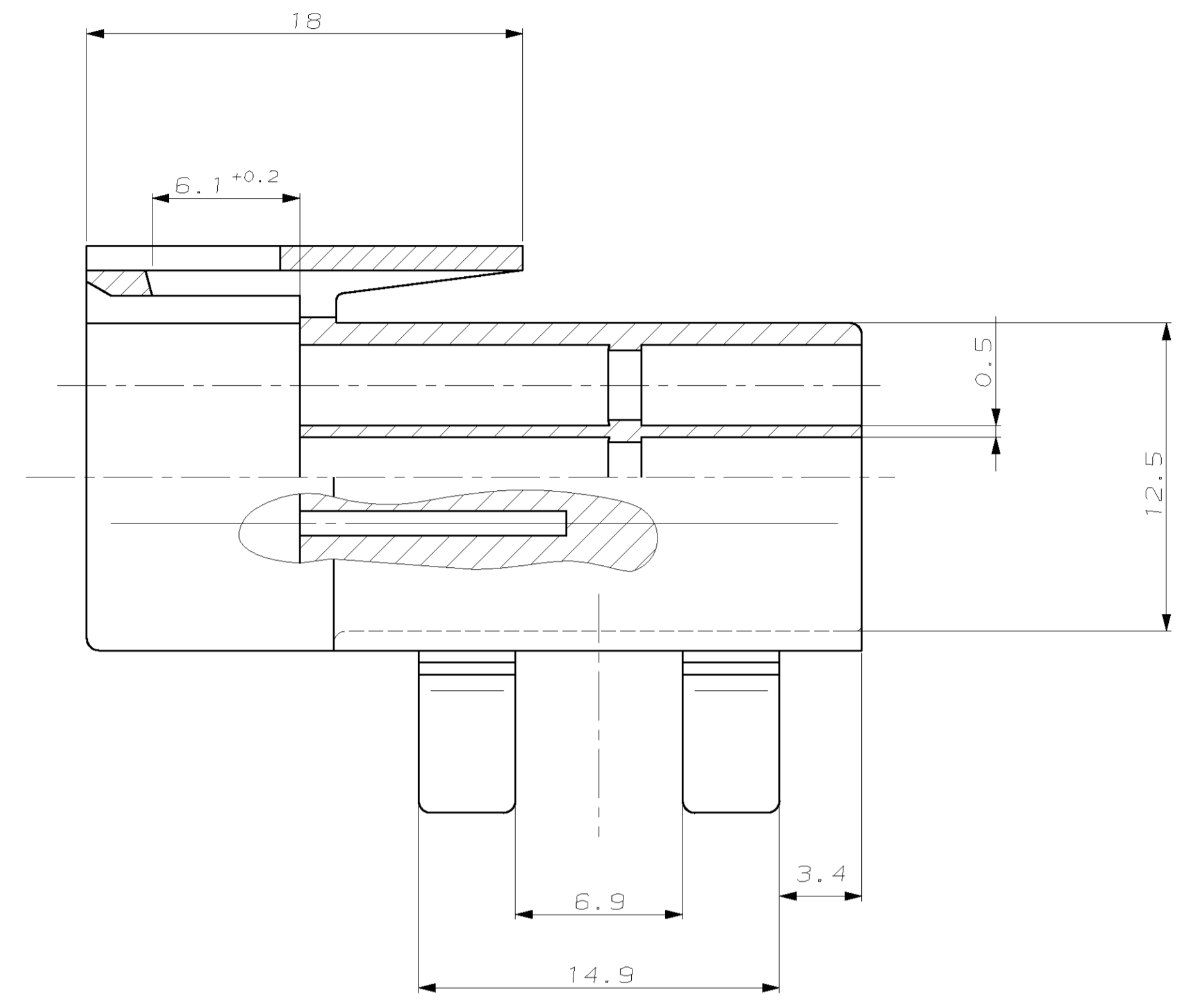
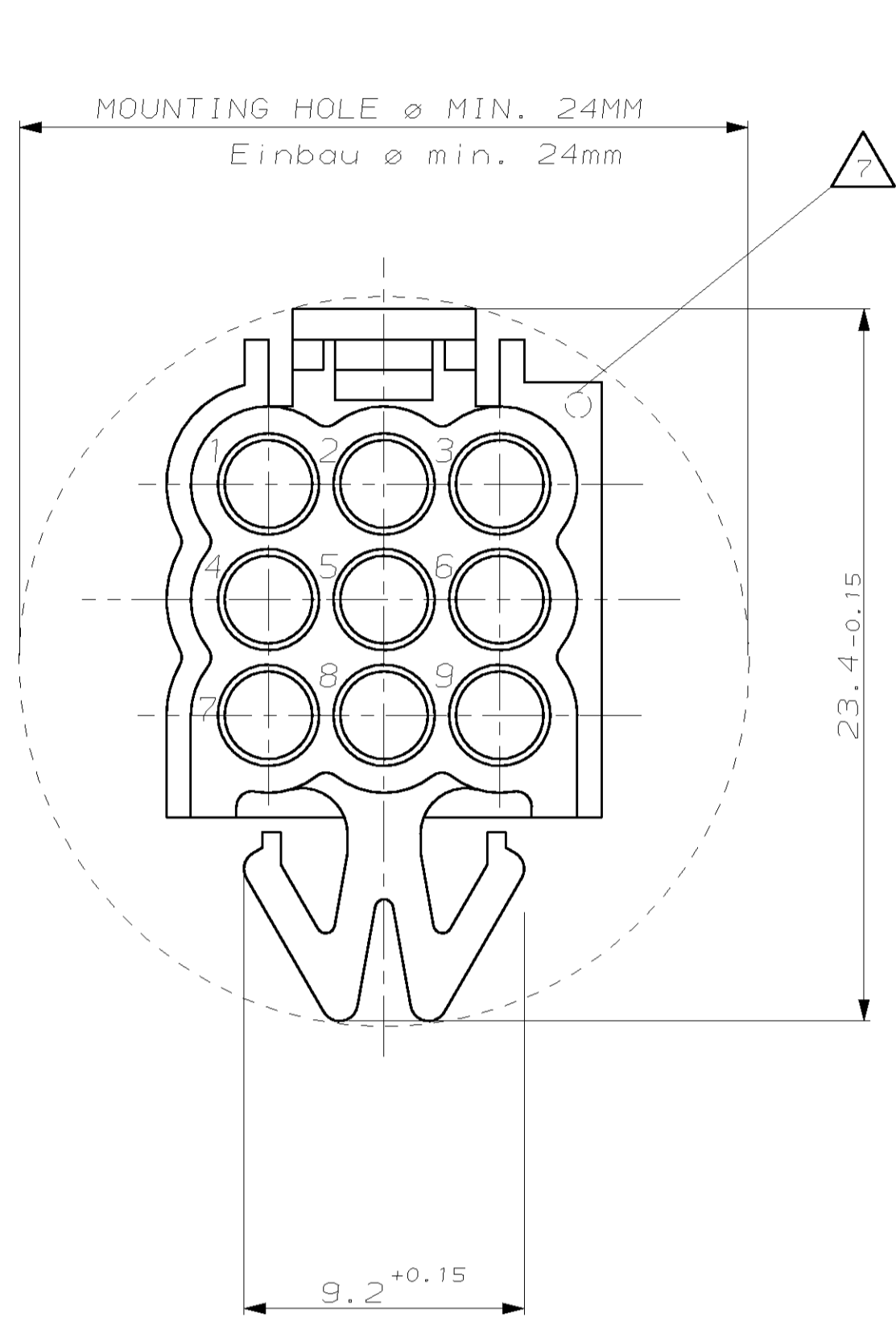
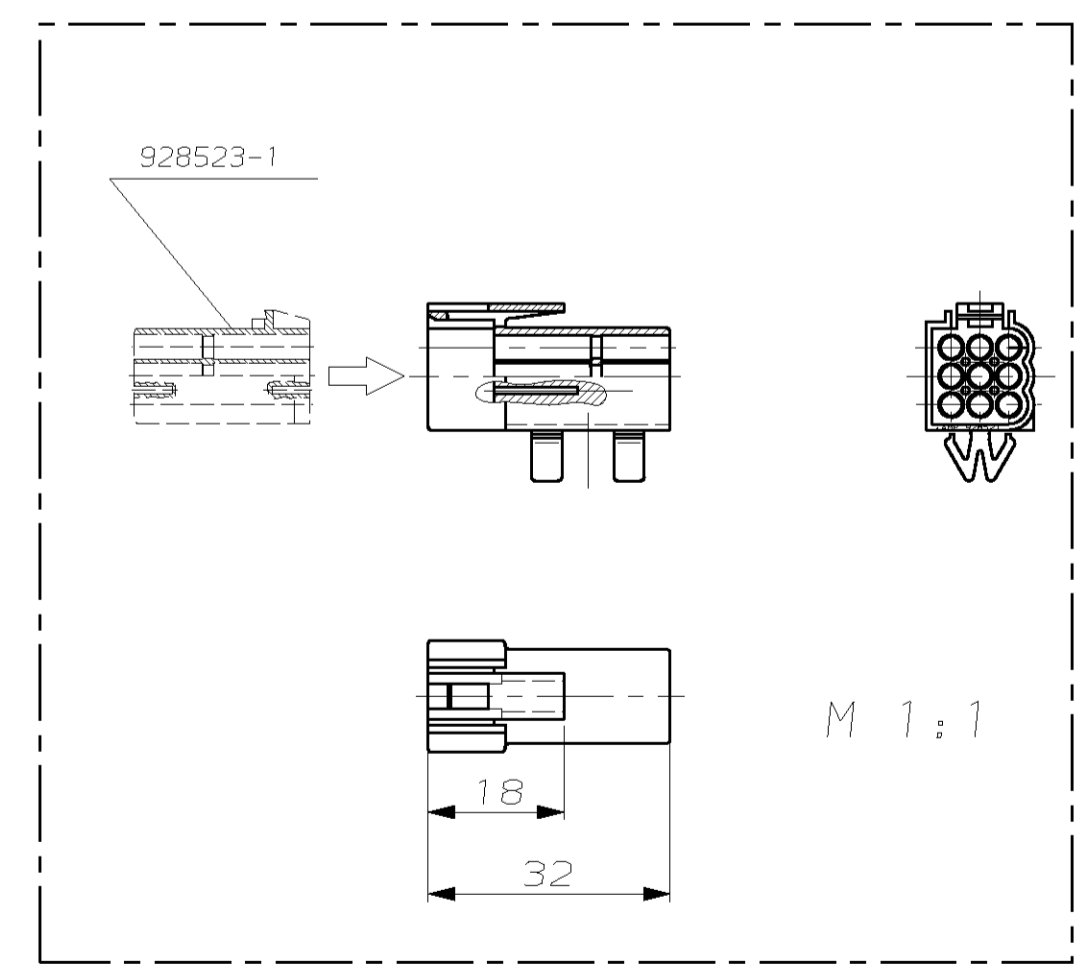
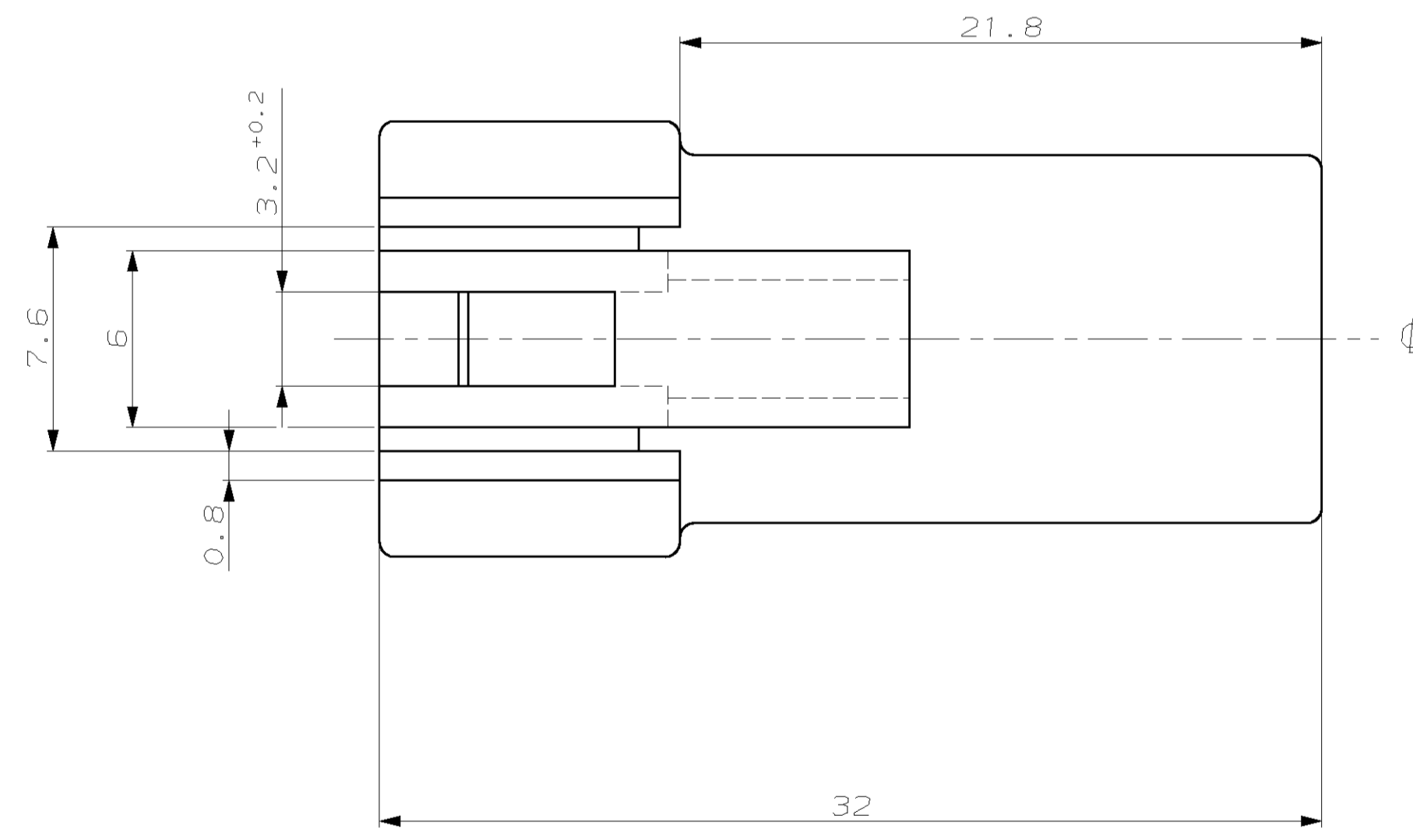
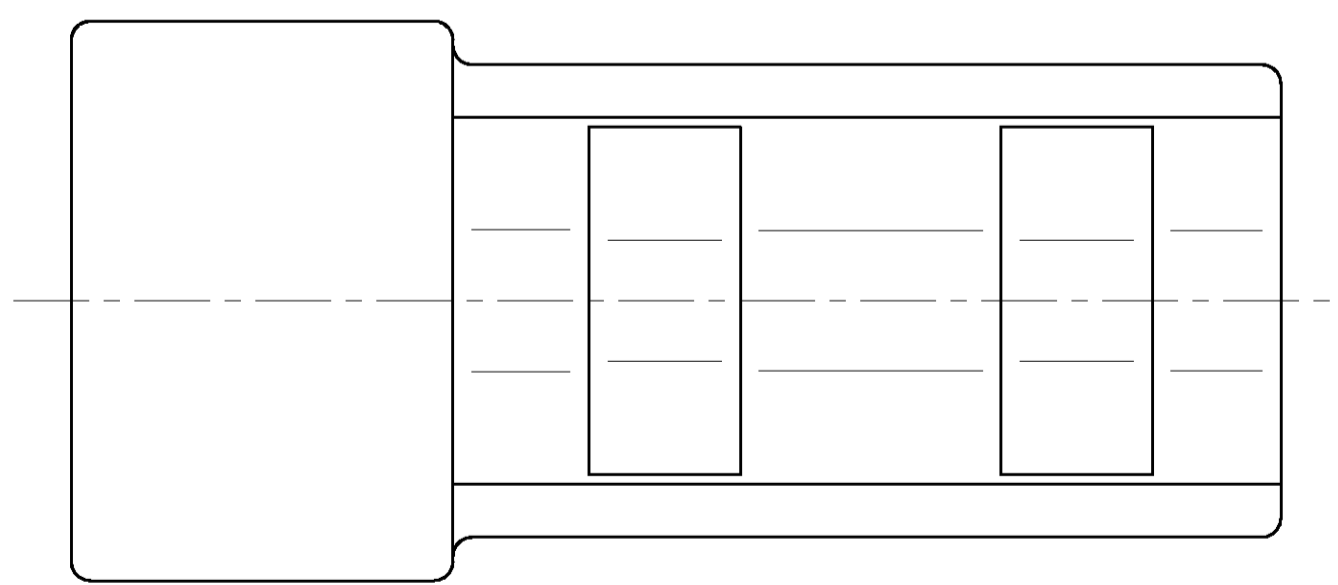


LOC	DIST	REV	LYR	DESCRIPTION	DATE	DMN	APVD
A1	-	H		SEE FCN E600-1060-97-1	29OCT97	Gass.	Kunze
		H1		SEE E-06-003777	15FEB06	C.A.	V.B.



VIEW X  
 Ansicht X



- NOTES:**  
 Bemerkungen:
- HOUSING WITHOUT CLIP 928522  
 Gehäuse ohne Blechverrastung 928522
  - STEEL HOLE  $8^{+0.2} \times 15^{+0.2}$   
 Blechausschnitt  $8^{+0.2} \times 15^{+0.2}$
  - RADII WITHOUT DIMENSIONS 0.5  
 Unbenannte Radien 0.5
  - ALL SHARP EDGES  
 Alle scharfen Kanten  $-0.2$
- 5 AMP LOGO  
 AMP Logo
- 6 ORDER NUMBER  
 Bestell-Nummer
- 7 CAVITY MARKING  
 Nestmarkierung

ONLY RECOMMENDED CONTACTTABLE / Kontakttable

AMP ORDER NUMBER	AMP PART NO.	SEAL	WIRE RANGE	MATERIAL	FINISH
0-927884-1	0-927885-1	-	0.5-1.0 FLR	CuSn4	PRE TIN PLATED
0-927884-2	0-927885-2	-	0.5-1.0 FLR	CuZn 30	PRE TIN PLATED
0-926980-2	0-926981-2	-	0.5-1.0 FLK	CuZn 30	PRE TIN PLATED

AMP ORDER NUMBER  
 STRIP FORM

LOOSE PIECE

SEAL

WIRE RANGE

MATERIAL

FINISH

(H1)

CUSTOMER PART NO.	AMP PART NO.	REV.	PCS.	MATERIAL	SURFACE COLOR	DESCRIPTION	ITEM NO.
-	0-928521-1	H	1	PA 66	NATURAL	CI II PIN HSG., 9POS.	1

THIS DRAWING IS A CONTROLLED DOCUMENT FOR THE INDUSTRY. IT IS SUBJECT TO CHANGE AND THE CONTROLLING ENGINEERING DEPARTMENT SHALL BE CONTACTED FOR THE LATEST REVISION. ANY CHANGES TO THIS DRAWING MUST BE APPROVED BY THE CONTROLLING ENGINEERING DEPARTMENT. FOR MORE INFORMATION, CONTACT THE CONTROLLING ENGINEERING DEPARTMENT.		DRAWN: H. Bouda CHECKED: D. Jakobleit	300CT97 500785	AMP Deutschland GmbH D - 63225 Langen
DIMENSIONS: DIMENSIONS IN MILLIMETERS TOLERANCES UNLESS OTHERWISE SPECIFIED: ANGLES/DIMENSIONS: ±0.1		MATERIAL: PA 66 FINISH/OBERFLÄCHE/FARBE: NATURAL	WEIGHT: 2.8g CUSTOMER DRAWING	PRODUCT SPEC: CI II PIN HSG., 9POS. CI II Stiftgehäuse, 9pol.
ONLY RECOMMENDED CONTACTTABLE / Kontakttable		AMP ORDER NUMBER STRIP FORM		SIZE: A1 CAGE CODE: 00779 DRAWING NO.: 928521