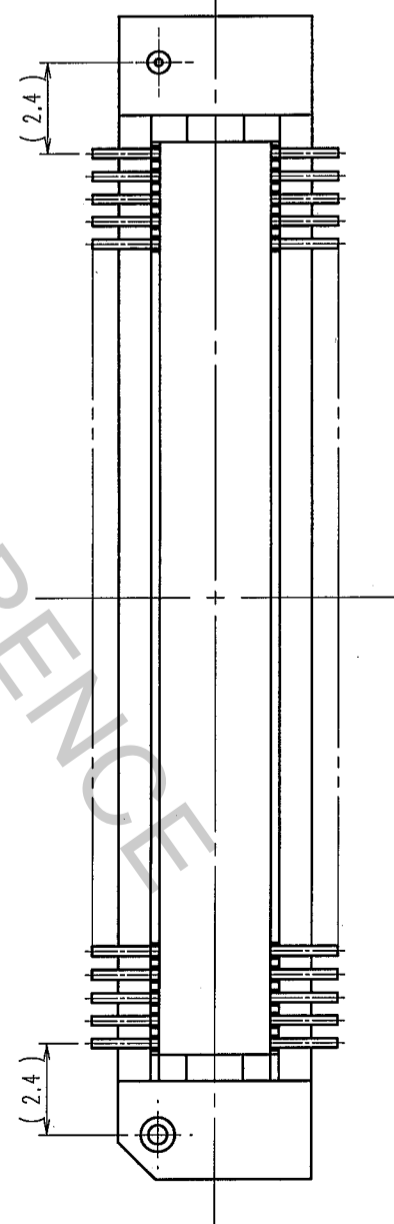
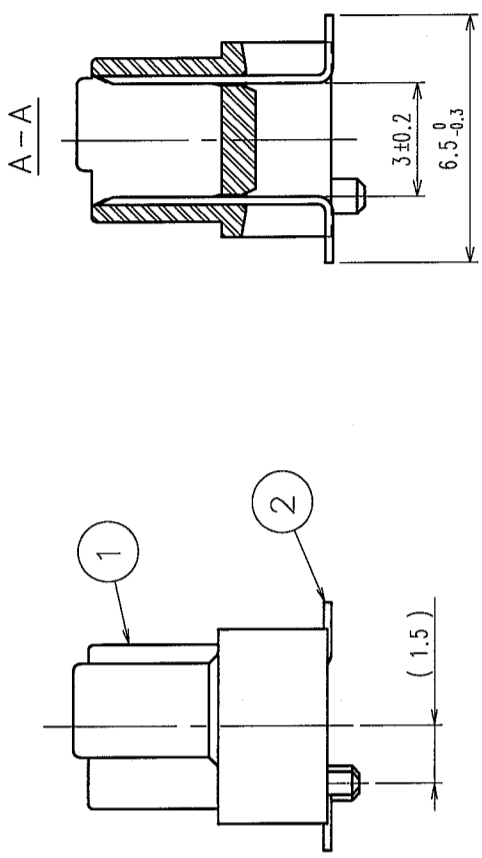
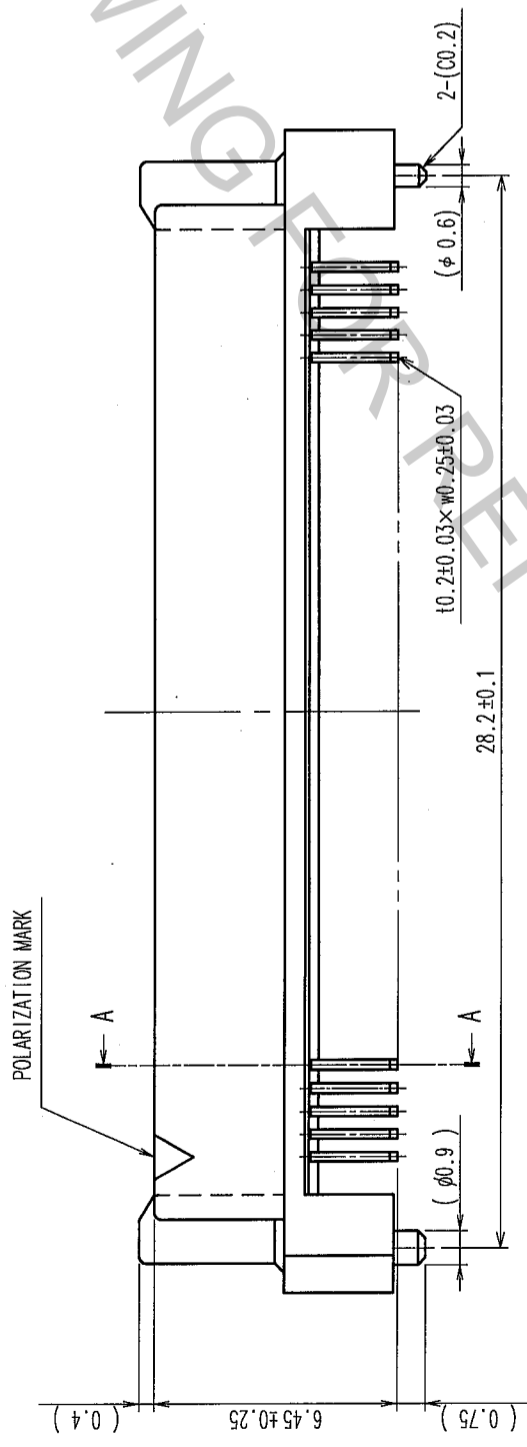
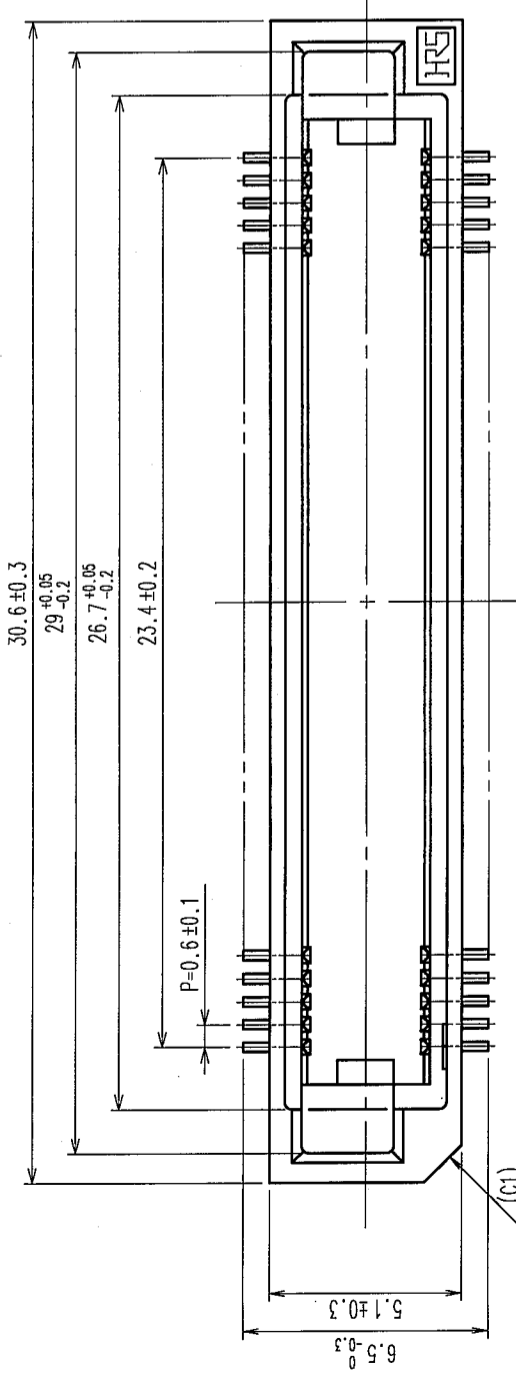
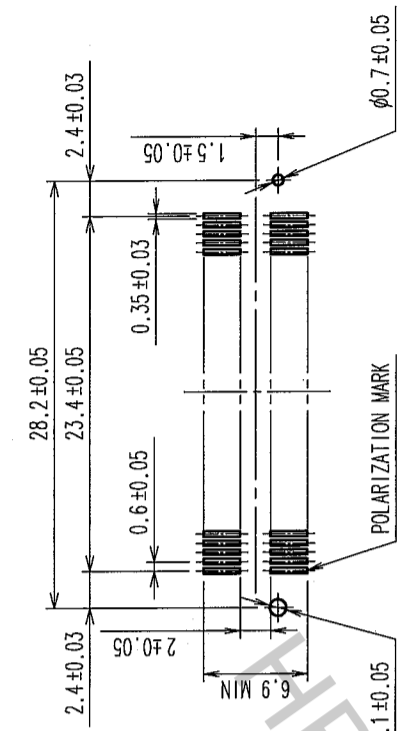


COUNT	DESCRIPTION OF REVISIONS	BY	CHKD	DATE	COUNT	DESCRIPTION OF REVISIONS	BY	CHKD	DATE
△					△				
△					△				
△					△				

RECOMMENDED LAND PATTERN DIMENSION OF PCB (MOUNTING SIDE) (2:1)

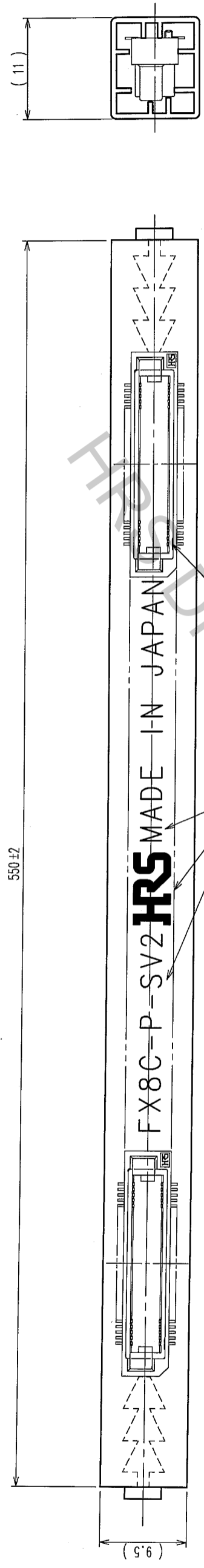


NOTE.  
 1. LEAD CO-PLANARITY SHALL BE 0.1mm MAX.  
 2. TUBE PACKAGING SHALL BE APPLIED FOR THIS PRODUCT.  
 SEE NEXT PAGE FOR DETAILS.  
 3. FOR MODIFICATION, ETC., PREVENTIVE HOLE FOR SINK MARK MAY BE ADDED ACCORDING TO CIRCUMSTANCES.  
 4. THE DIMENSIONS IN PARENTHESES ARE FOR REFERENCE.

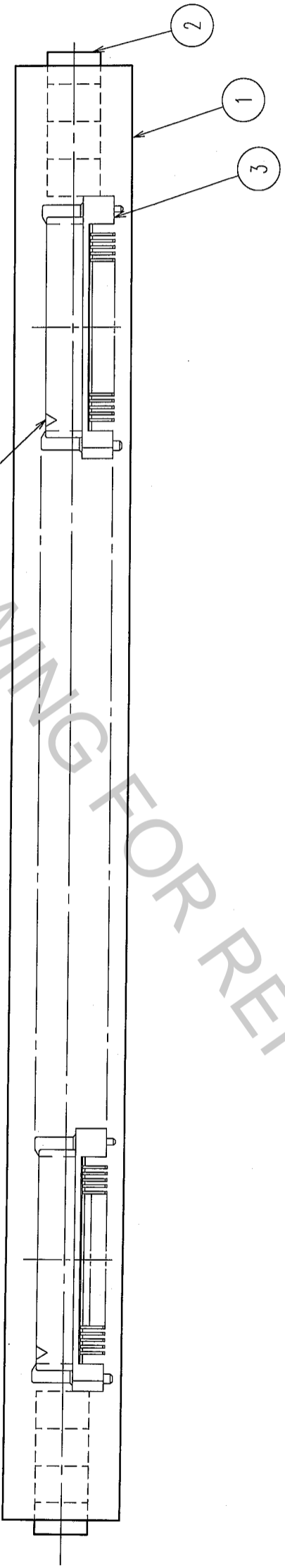
1	PPS	LIGHT BROWN (UL94V-0)	2	PHOSPHOR BRONZE	CONTACT AREA: GOLD 0.1μm min. LEAD AREA: TIN-PLATING 1μm min. UNDER PLATING: NICKEL 1μm min.
NO.	MATERIAL	FINISH, REMARKS	NO.	MATERIAL	FINISH, REMARKS
CODE NO. (COLD) CL			DESIGNED	CHECKED	APPROVED
			K. NAKAMURA	K. NAKAMURA	H. Okawa
			05.12.09	05.12.09	'05.12.12
DRAWING NO. EDC3-150842-21		PART NO. FX8C-80P-SV2(91)		RELEASED	
SCALE 5:1		CODE NO. CL578-0543-9-91		1/2	
UNITS mm		HIROSE ELECTRIC CO., LTD.		FORM NO. 229	

TO	
PCK	

COUNT	DESCRIPTION OF REVISIONS	BY	CHKD	DATE	COUNT	DESCRIPTION OF REVISIONS	BY	CHKD	DATE
△					△				
△					△				
△					△				



MARKING POLARIZATION MARK



NOTE 1. 1 TUBE : 17 CONNECTORS.  
 2. THE DIMENSIONS IN PARENTHESES ARE FOR REFERENCE.

2		POLYVINYL CHLORIDE (STOPPER)		3		(CONNECTOR)	
NO.	MATERIAL	FINISH, REMARKS	NO.	MATERIAL	FINISH, REMARKS	NO.	MATERIAL
1	POLYVINYL CHLORIDE	(TUBE)	1	POLYVINYL CHLORIDE	(TUBE)		
CODE NO. (OLD)		CL	DRAWN		DESIGNED	CHECKED	APPROVED
			K. NAKAMURA		K. NAKAMURA	H. Okawa	H. Okawa
			05.12.09		05.12.09	05.12.12	05.12.12
DRAWING NO.		EDC3-150842-21	PART NO.		FX8C-80P-SV2(91)		
SCALE		FREE	CODE NO.		CL578-0543-9-91		
UNITS		mm	HIROSE ELECTRIC CO., LTD				

TO	
PCK	