

NOTES) 1. ALL LEADS METAL FITTINGS CO-PLANARITY SHALL BE 0.1mm MAX.  
 2. IS NON-CONDUCTIVE AREA.  
 3. RECOMMENDED WAY FOR USE IS CONTACT PIN : 40PIN. GROUND PIN : 80PIN.

2	PHOSPHOR BRONZE	CONTACT AREA: Au 0.05 μm MIN SMT LEAD: Au 0.05 μm MIN UNDERPLATING: NICKEL 1 μm MIN	7	PS	CLEAR(REINFORCEMENT COLLAR)
1	LCP	BLACK, UL94V-0	6	PS	BLACK(PLASTIC REEL)
			5	POLYESTER	CLEAR(COVER TAPE)
			4	PS	CLEAR(EMBOSSED CARRIER TAPE)
			3	PHOSPHOR BRONZE	SURFACE: Au 0.05 μm MIN SMT LEAD: Au 0.05 μm MIN UNDERPLATING: NICKEL 1 μm MIN

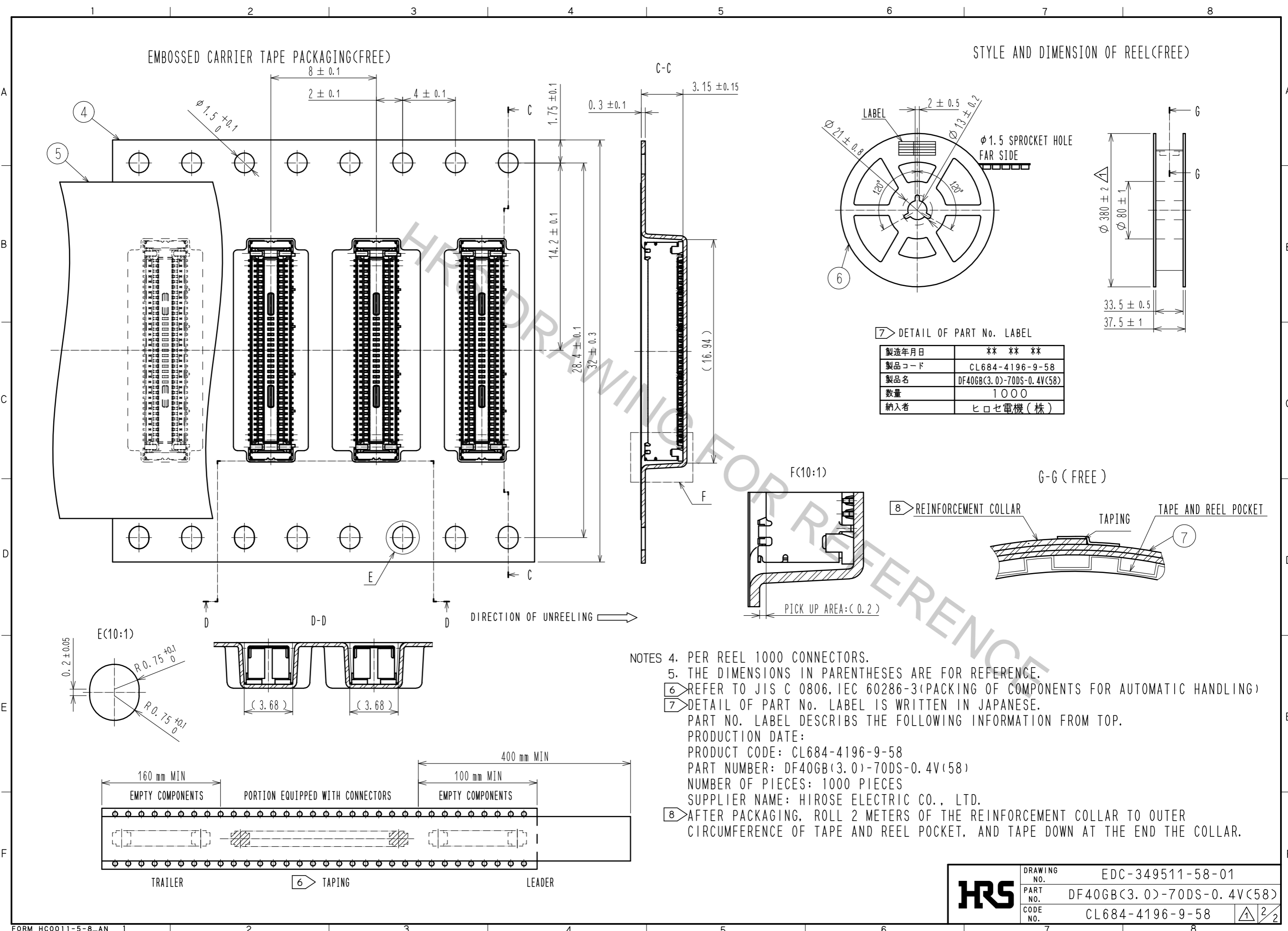
  

NO.	MATERIAL	FINISH .	REMARKS	NO.	MATERIAL	FINISH .	REMARKS
7	PS			7	PS		CLEAR(REINFORCEMENT COLLAR)
6	PS			6	PS		BLACK(PLASTIC REEL)
5	POLYESTER			5	POLYESTER		CLEAR(COVER TAPE)
4	PS			4	PS		CLEAR(EMBOSSED CARRIER TAPE)
3	PHOSPHOR BRONZE			3	PHOSPHOR BRONZE		SURFACE: Au 0.05 μm MIN SMT LEAD: Au 0.05 μm MIN UNDERPLATING: NICKEL 1 μm MIN

UNITS		SCALE	COUNT	DESCRIPTION OF REVISIONS	DESIGNED	CHECKED	DATE
mm		10: 1	1	DIS-H-00000833	SH. HOSODA	TS. MIYAZAKI	15. 08. 20
<b>HRS</b> HIROSE ELECTRIC CO., LTD.		APPROVED : MO. ISHIDA	15. 07. 01	DRAWING NO. EDC-349511-58-01			
		CHECED : TS. MIYAZAKI	15. 07. 01	PART NO. DF40GB(3. 0)-70DS-0. 4V(58)			
		DESIGNED : SH. HOSODA	15. 07. 01	CODE NO. CL684-4196-9-58			
		DRAWN : KR. AJITO	15. 07. 01				

Apr.1.2017 Copyright 2017 HIROSE ELECTRIC CO., LTD. All Rights Reserved.



NOTES

4. PER REEL 1000 CONNECTORS.
5. THE DIMENSIONS IN PARENTHESES ARE FOR REFERENCE.
6. REFER TO JIS C 0806, IEC 60286-3(PACKING OF COMPONENTS FOR AUTOMATIC HANDLING)
7. DETAIL OF PART No. LABEL IS WRITTEN IN JAPANESE.  
PART NO. LABEL DESCRIBS THE FOLLOWING INFORMATION FROM TOP.  
PRODUCTION DATE:  
PRODUCT CODE: CL684-4196-9-58  
PART NUMBER: DF40GB(3.0)-70DS-0.4V(58)  
NUMBER OF PIECES: 1000 PIECES  
SUPPLIER NAME: HIROSE ELECTRIC CO., LTD.
8. AFTER PACKAGING, ROLL 2 METERS OF THE REINFORCEMENT COLLAR TO OUTER CIRCUMFERENCE OF TAPE AND REEL POCKET, AND TAPE DOWN AT THE END THE COLLAR.

<b>HRS</b>	DRAWING NO.	EDC-349511-58-01
	PART NO.	DF40GB(3.0)-70DS-0.4V(58)
	CODE NO.	CL684-4196-9-58
		1/2