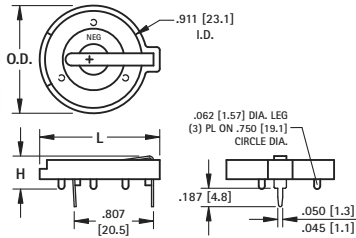


THRU-HOLE (THM) & SURFACE MOUNT (SMT) COIN CELL HOLDERS

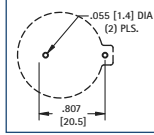
23mm to 30mm COIN CELL HOLDERS

23mm

- Advanced air-flow design enhances air circulation around battery
- Unique notched slots assure quick and easy battery insertion and replacement



Mounting Detail



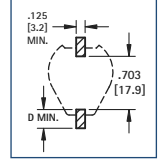
AVAILABLE ON TAPE AND REEL

- SMT solder tail with "Flow-Hole" design for increased joint strength
- Viewable solder tails assures reliable joint inspection
- All conductive polystyrene carrier tape meets ANSI/EIA - 481 standard



Surface Mount

Pad Layout



MATERIAL:

Contacts: .020 (.50) Spring Steel, Tin-Nickel Plate

Base: PBT, UL Rated 94V-0

Operating Temperature: -60°F to +293°F (-50°C to +145°C)

CAT. NO.	H	L	O.D.	NO. OF CELLS	BATTERY REFERENCE
104	.335 (8.5)	1.150 (29.2)	1.000 (25.4)	(1) Cell (Any 23mm)	BR2320, CR2320,
107	.335 (8.5)	1.219 (31.0)	1.093 (27.8)	(1) Cell (Any 23mm)	CL2325, DL2330,
1027	.452 (11.5)	1.219 (31.0)	1.093 (27.8)	(1) 2354 (2) 2320, (2) 2325, (2) 2330	CL2354, CR2335

MATERIAL:

Contacts: .015 (.38) Steel

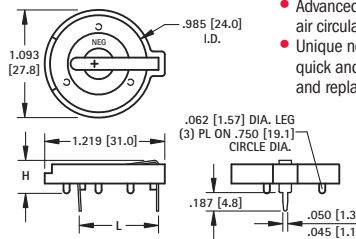
Base: High Temp Nylon 46, UL Rated 94V-0

Operating Temperature: -60°F to +293°F (-50°C to +145°C)

Tin-Nickel Plate		Gold Plate (Flash)		D PAD SIZE	BATTERY REFERENCE
CAT. NO.	ON TAPE BULK & REEL	CAT. NO.	ON TAPE BULK & REEL		
1071	1071TR	1091	1091TR	.156 (4.0)	CR2320, CL2325,
1073	1073TR	1083	1083TR	.278 (7.1)	DL2330, CR2335

Tape & Reel Spec's: 44mm wide; 32mm pitch; 13 inch reel, (200 pieces per reel)

24mm

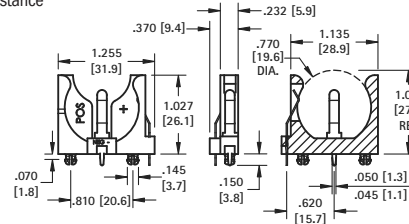


- Advanced air-flow design enhances air circulation around battery
- Unique notched slots assure quick and easy battery insertion and replacement

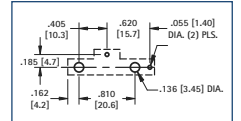
- Polarized holder
- Mounts securely for wave soldering
- Reliable spring tension assures low contact resistance



Thru Hole Mount



Mounting Detail



MATERIAL:

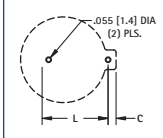
Base: PBT, UL Rated 94V-0

Contacts: .020 (.50) Spring Steel, Tin-Nickel Plate

Operating Temperature: -60°F to +293°F (-50°C to +145°C)

CAT. NO.	C	H	L	NO. OF CELLS	BATTERY REFERENCE
105	.074 (1.9)	.335 (8.5)	.805 (20.5)	(1) 2430	CR2430, CL2430, BR2450, CR2477
1025	.074 (1.9)	.452 (11.5)	.805 (20.5)	(1) 2450 (2) 2430	
1025-7	.074 (1.9)	.503 (12.8)	.805 (20.5)	(1) 2477 (2) 2430	

Mounting Detail



MATERIAL:

Base: PBT, UL Rated 94V-0

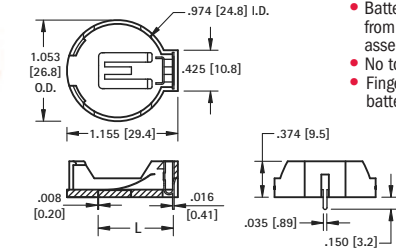
Contacts: .020 (.50) Spring Steel, Tin-Nickel Plate

Operating Temperature: -60°F to +293°F (-50°C to +145°C)

CAT. NO.	BATTERY REFERENCE
1068	(1) CR2450, (1) CL2450

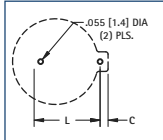
24mm TOP Loading

AUTO-IN/EZ-OUT



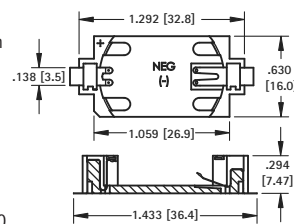
- Battery "Pop-in" from Top for automated assembly
- No tools required
- Finger pressure battery release

Mounting Detail



AVAILABLE ON TAPE AND REEL

- Polarized holder
- Low profile for densely packed PCB's
- Compatible with vacuum and mechanical pick & place systems
- Conductive carrier tape meets ANSA/EIA- 481 standard



Surface Mount

MATERIAL:

Base: LCP, UL Rated 94V-0

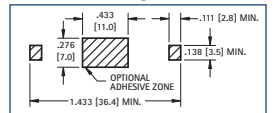
Contacts: .006 (.15) Phosphor Bronze, Gold Plate (Flash)

Operating Temperature: -60°F to +293°F (-50°C to +145°C)

CAT. NO.	ON TAPE BULK & REEL	BATTERY REFERENCE
1052	1052TR	(1) CR2450

Tape & Reel Spec's: 56mm wide; 20mm pitch; 13 inch reel, (400 pieces per reel)

Mounting Detail



MATERIAL:

Contacts: .020 (.50) Spring Steel, Tin-Nickel Plate

Base: PBT, UL Rated 94V-0

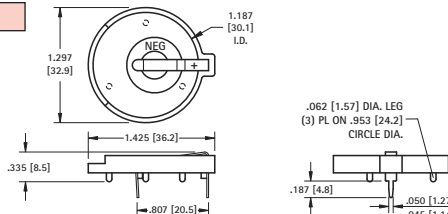
Operating Temperature: -60°F to +293°F (-50°C to +145°C)



Thru Hole Mount

CAT. NO.	BATTERY REFERENCE
301	BR3032

30mm



Mounting Detail

